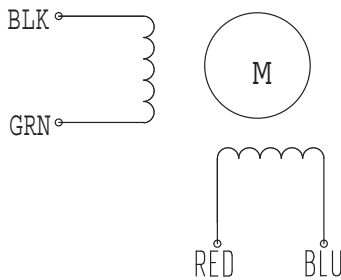


HIGH TORQUE HYBRID STEPPING MOTOR SPECIFICATIONS

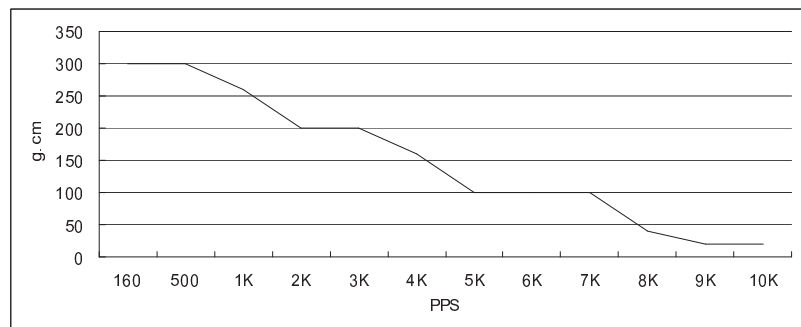
General specifications		Electrical specifications	
Step Angle (°)	1.8	Rated Voltage (V)	3.8
Temperature Rise (°C)	80 Max (rated current, 2 phase on)	Rated Current (A)	0.67
Ambient Temperature (°C)	-20 ~ +50	Resistance Per Phase ($\pm 10\%$ Ω)	5.6 (25°C)
Number of Phase	2	Inductance Per Phase ($\pm 20\%$ mH)	3.2
Insulation Resistance (M Ω)	100 Min (500VDC)	Holding Torque (N.cm)	6
Insulation Class	Class B	Detent Torque (N.cm)	
Max.radial force (N)	28 (20mm from the flange)	Rotor Torque (g.cm ²)	9
Max.axial force (N)	10	Weight (Kg)	0.12

● Wiring Diagram :



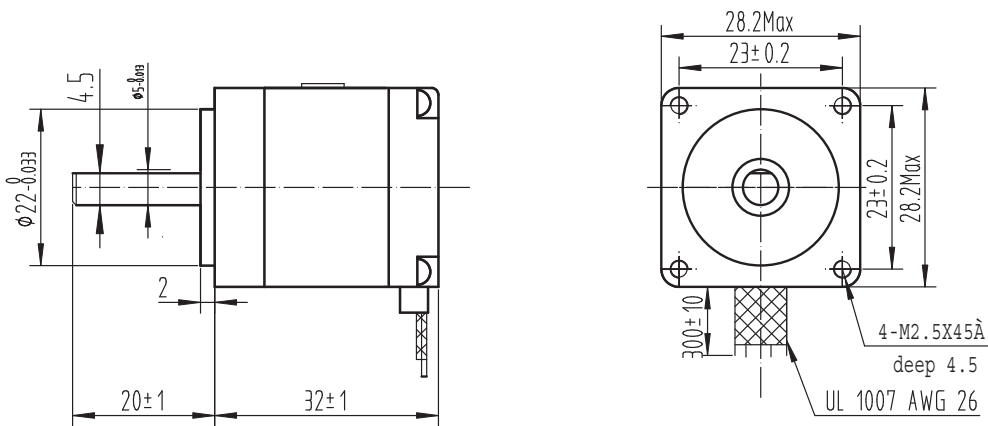
● Pull out torque curve :

VOLTAGE: 24VDC, CONSTANT CURRENT:0.67A, HALF STEP



● Dimensions:

(unit=mm)



REV	REVISIONS	DESCRIPTION	BY	DATE	SY28STH32-0674A	TECHNICAL CONDITIONS
DRAW	kongxiangzhen 2012.05.13				CHANGZHOU SONGYANG MACHINERY & ELECTRONICS NEW TECHNIC INSTITUTE	020032033
CHECK						
APPROVE						