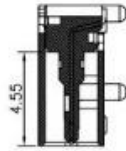
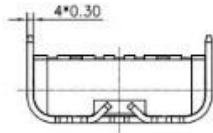


RoHS

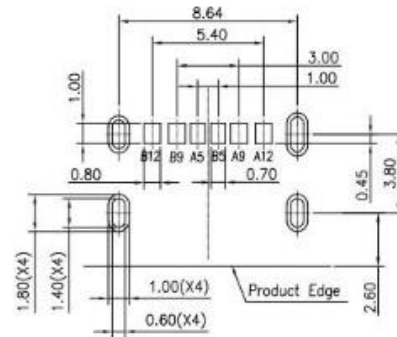
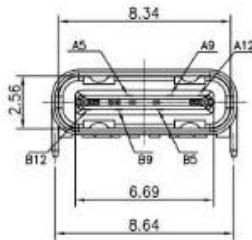
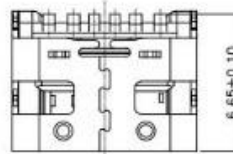
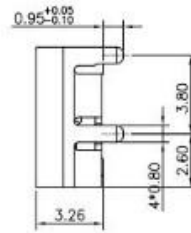
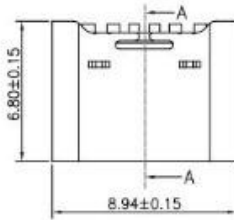


剖面图 A-A



Specification:

1. Electrical Characteristics:
 - Contact Current Rating: 5 Amperes Max.
 - Rated Voltage: 20V Max.
 - Dielectric Withstanding Voltage: AC 100V r.m.s.
 - Insulation Resistance: 100 MΩ Minimum.
 - Contact Resistance: 40 mΩ Maximum.
2. Environmental:
 - Operating Temperature: -40°C~+85°C.
3. Mechanical Characteristics:
 - Insertion Force: 5~20Nf.
 - Withdrawal Force: 6~20Nf.
 - Durability Cycles: 3000 Cycles.



RECOMMENDED P.C.B. LAYOUT
TOLERANCE UNSPECIFIED ±0.05mm

A5	CC1	B5	CC2
A9	VBUS	B9	VBUS
A12	GND	B12	GND
PIN	SIGNAL NAME	PIN	SIGNAL NAME

UNITS	SCALE	REV.	SHEET
mm	1:1	B3	1 OF 1
DATE		2017.07.12	
DR.		LIN YUN	
CHK.		LI JY	
APPD.		ZHANG	
GENERAL TOLERANCE			
0.	±0.30		
0.0	±0.20		
0.00	±0.15		
0.*	±2*		
0.0*	±1*		

TITLE			
US3 C TYPE F 6Pin SMT			
MAT'L	SEE TABLE	FINISH	SEE TABLE
OWG.NO.		PART NO.	SEE TABLE
		A	SIZE A4